

# PERFEKT FUTUR

Du möchtest dabei gewesen sein?

BCHU

200168

9

22G1

MAX. GROSS

30.480 KG  
67.200 LB

TARE

2.150 KG  
4.740 LB

NET

28.330 KG  
62.460 LB

CU. CAP

33.2 CU.M  
1.170 CU.FT









The center for entrepreneurs Perfekt Futur in the former pig market hall is a central element of the old slaughterhouse's (Alter Schlachthof) conversion into a center of cultural and creative industries. Cost-effective rooms, industry-tailored support and the old slaughterhouse Karlsruhe as creative breeding ground make it easier for founders to enter into cultural and creative industries. Seventy sea freight containers inside of the hall offer small and medium-sized work units and open areas that are flexible and changeable and as individual as the creative persons' ideas.

The rooms between the containers offer space for presentations and exhibitions and can be used as coworking spaces, zones for relaxation and temporary work places. And just in case the creative work comes to a temporary stop, the hall's café invites you to have a break and to generate new ideas within a relaxed atmosphere.



# The area

The construction of the Karlsruhe slaughterhouse started in 1885, under the direction of town master mason Wilhelm Strieder. The area was built as a double-wing installation with a slaughterhouse and a stockyard with the two courtyards being separately enclosed by a wall in order to avoid the transmission of infections. Whereas the real slaughtering process used to take place in the slaughterhouse, the stockyard served as the place to examine livestock and bargain.





The old pig market hall, which is located inside the stockyard, is a historical building constructed in 1927/28. The hall's architecture is marked by the time of New Objectivity and therefore, it differs significantly from the other buildings in the area. These are characterized by a representative style and adorned with gable roofs and date back to the area's first construction phase in the late 19th century. The two naves on the roof of the hall are particularly conspicuous and were built for lighting and ventilating. Today they still serve this initial purpose.

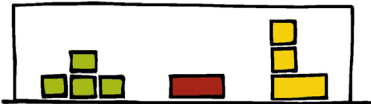
Over the decades, the slaughterhouse has changed continuously. Numerous historical buildings were replaced by new buildings in the course of time. In 2006, the slaughterhouse was closed down completely, mainly because of economic factors. The idea of the area's conversion into a center of cultural and creative industries arose as early as in the 1990s. Plans were further elaborated in the course of the candidature of the city of Karlsruhe as European Capital of Culture 2010. The conversion of the old slaughterhouse into an area of cultural and creative industries shall be completed until 2015, when the city celebrates its 300th birthday.

# The idea

The Perfekt Futur is one of the most important elements of the old slaughterhouse's conversion. The plans for the installation of a center for entrepreneurs that is specifically focused on cultural and creative industries emerged from the wish to make highly qualified graduates of creative and technological courses of study at local colleges and the university stay in Karlsruhe, even beyond their time as a student. From the start, the goal was to facilitate flexible and innovative work in an environment, which is even architecturally demanding, and adapts to the conditions and demands of the creative world of work.

In 2008, first drafts for the project were created. In 2009, the planning was made progress with. Among other things, a model container giving an impression of the work units in progress was placed in the area. In July 2010, the need for a center for founders of a new business in cultural and creative industries, as it was planned, was confirmed within the framework of a potential analysis by Fraunhofer ISI. In order to take the potential founders' needs fully into account, a user workshop was conducted in October 2010, in which participated students of different colleges in Karlsruhe and the KIT. Finally, in the end of 2011, the local council approved the implementation of the container model.

An interdisciplinary team, which is composed of the office for cultural and creative industries K3 and Karlsruher Fächer GmbH & Co. Stadtentwicklungs-KG, is responsible for the project with regard to content.





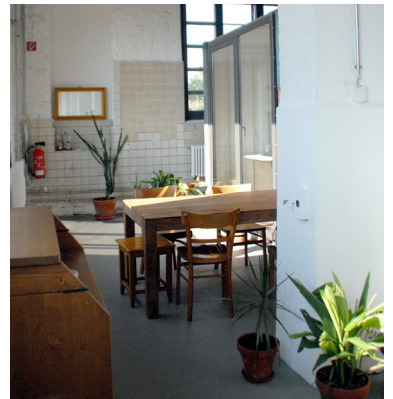
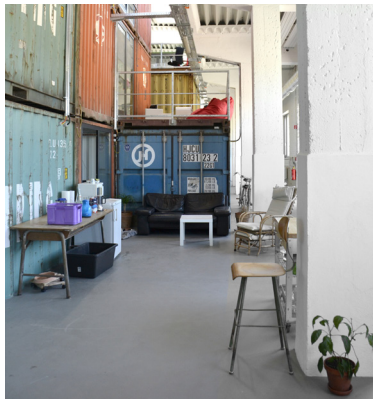


# The space



In the hall's interior, sea freight containers form up to a city. The approximately 70 containers form closed workspaces – office units of different sizes, which allow for secluded thinking or teamwork. They are initially unfurnished and left in a neutral condition and therefore, offer the possibility of individual organization of the workplace, and stay open and changeable. Same holds for the rooftop terraces, which emerge from the spaces on and between the containers. They are what they are supposed to be: outsourced office areas, conference rooms, and rooms for teamwork or temporary places of work for externals, quiet or communication zone. The users are part and parcel of this hall. Being the cover of the container city, it can and shall be freely arranged, furnished, used and played at. The café in the entrance area completes the hall's extraordinary atmosphere. It is not only the place for drinks served in a pleasant atmosphere, but it is the single point of contact and meeting point for the user community and furthermore the point of information for guests and external creative professionals.



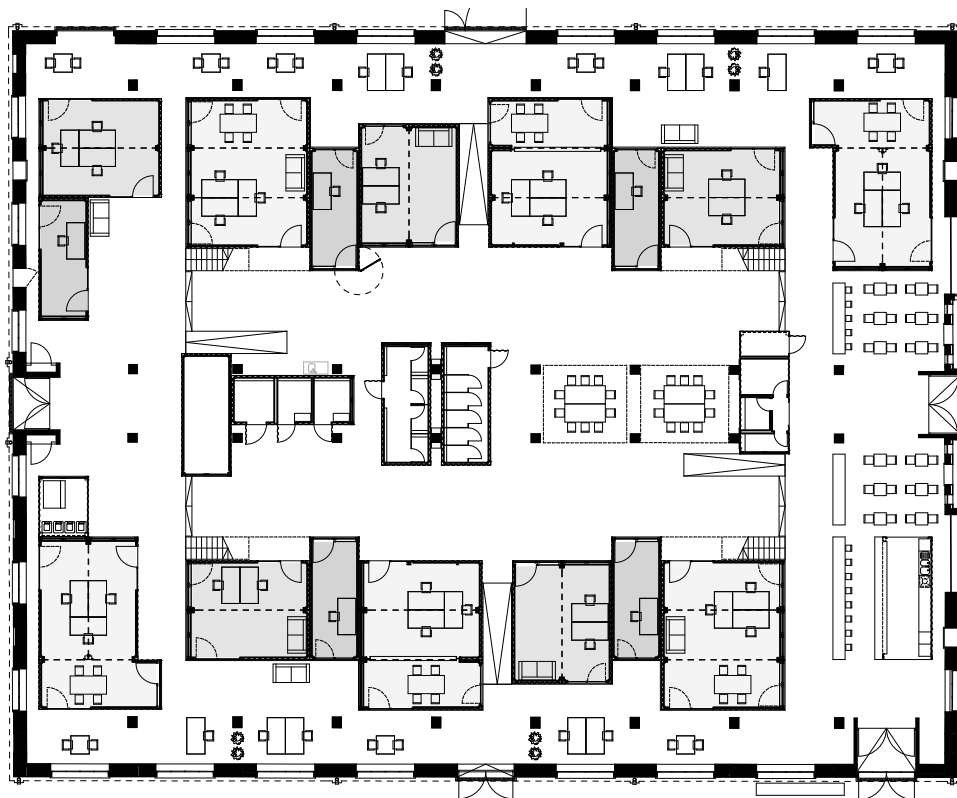






The Perfekt Futur offers exhibition and presentation areas, which can as well be used as event areas and adapted to the founders' ideas and imaginings. The café area is equipped with internet access, which facilitates working freely, even outside of one's own office. Several service containers (lavatories, showers) as well as lockers and conference containers are at the users' disposal. Additionally, the area's own workshop can be shared soon, if required.





Ground floor

On the ground floor, you enter the hall passing through the café area. Besides some office containers there are also the communal containers here. The free spaces can be used as exhibition and presentation zones.



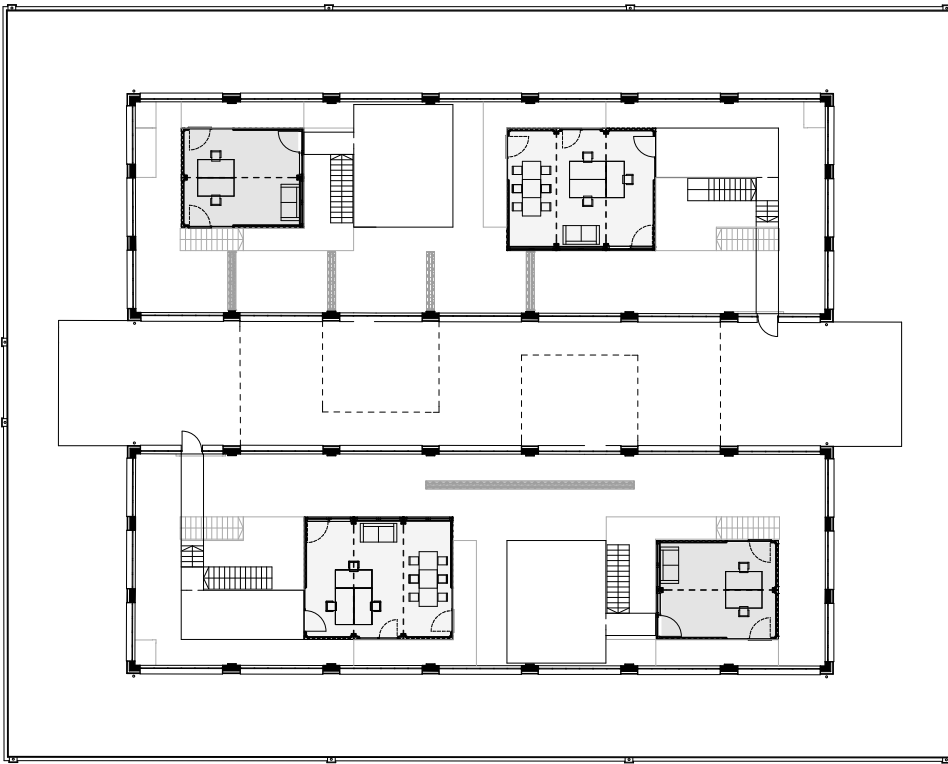




First floor

Beside the office containers on the first and second floor there are also roof terraces which can be used as additional space.

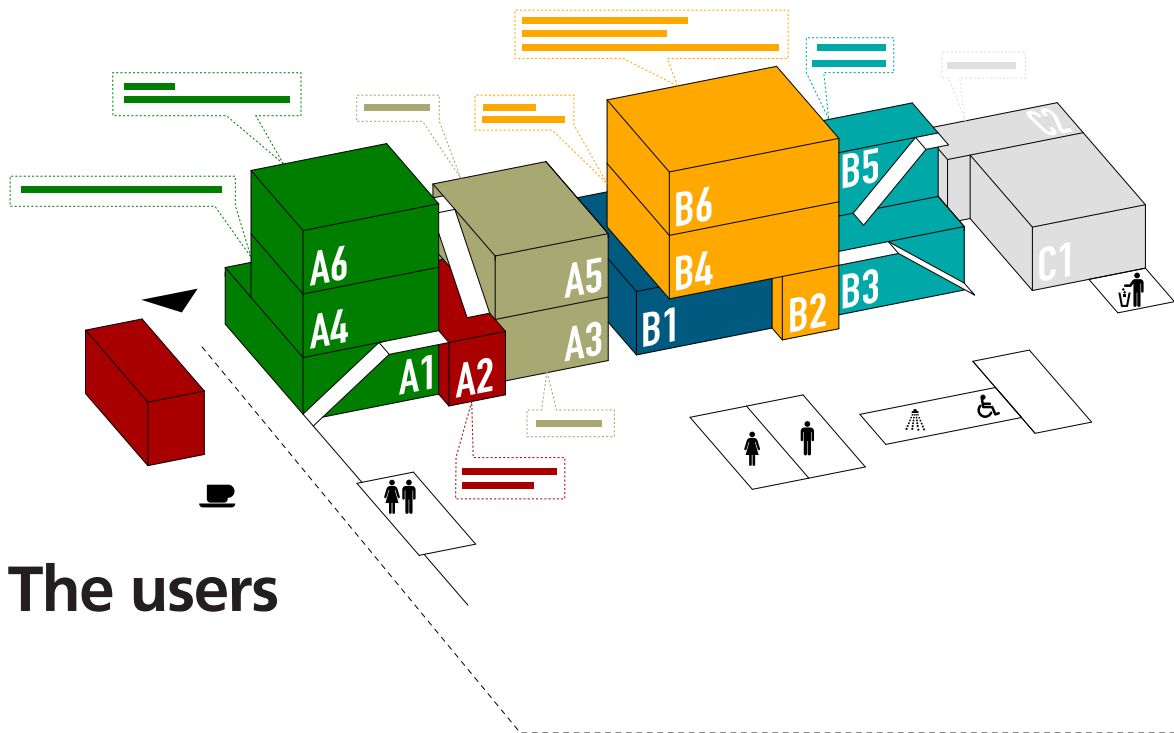




## Second floor

The terraces may serve as a temporary workplace for a colleague joining in a project, a place for the lunch break or for having a beer at the end of work together with the founders from next-door. They offer additional room for all those things that do not have to take place at the own workplace – with a view over the rest of the container city.

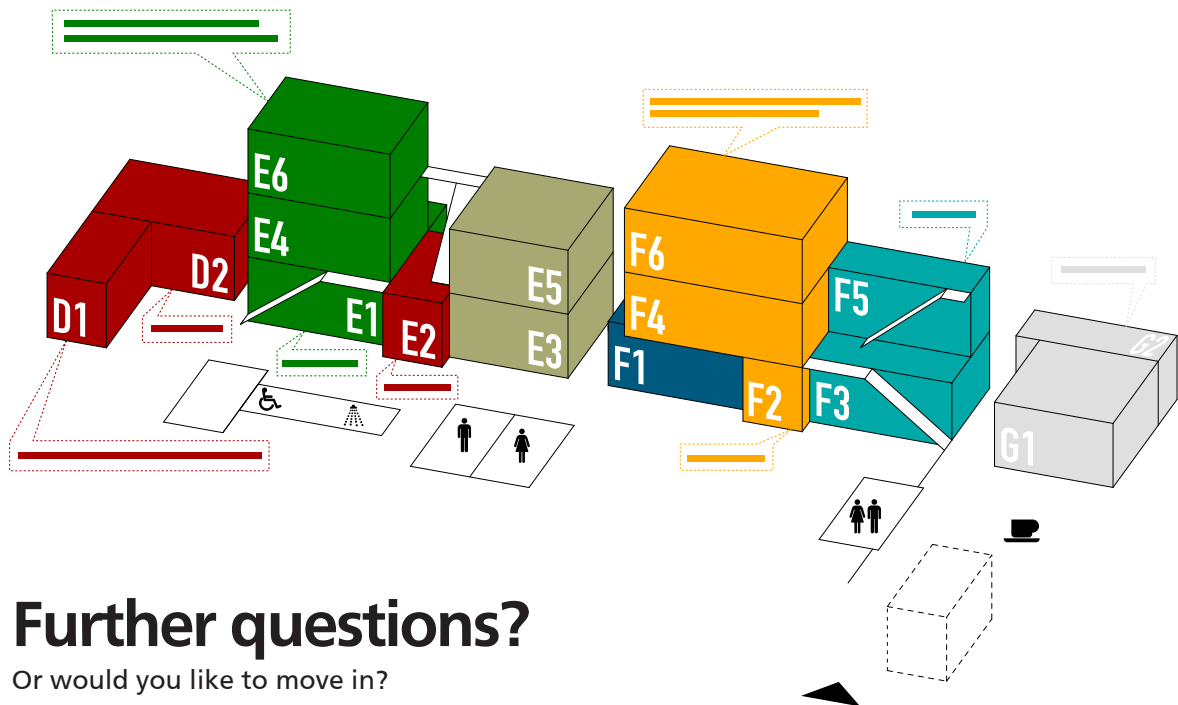




## The users

First and foremost, the Perfekt Futur addresses everyone, who has an innovative idea with a convincing concept and wants to create a professional existence for oneself in the creative or cultural sector and is therefore searching for cost-effective locations in an exciting and inspiring environment. Applications are possible via the internet portal [www.perfekt-futur.de](http://www.perfekt-futur.de).

In order to achieve synergy effects and to strengthen the whole area's networking potential, the mixture of founders of cultural and creative industries shall be as heterogeneous as possible. Besides the permanent workspaces, even temporary working is possible in the hall. Therefore, external creative professionals and freelancers are welcome to discover the old pig market hall as a place of creative work.



# Further questions?

Or would you like to move in?

Karlsruher Fächer GmbH & Co. Stadtentwicklungs-KG

Zähringerstraße 72, 76133 Karlsruhe

Lina Hoscislowski

[lina.hoscislowski@kfg.karlsruhe.de](mailto:lina.hoscislowski@kfg.karlsruhe.de)

T 0721 133 2412

K3 Kultur- und Kreativwirtschaftsbüro

Durlacher Allee 53, 76131 Karlsruhe

Sabrina Isaac-Fütterer

[sabrina.isaac-fuetterer@kultur.karlsruhe.de](mailto:sabrina.isaac-fuetterer@kultur.karlsruhe.de)

T 0721 133 4055

Dirk Metzger

[dirk.metzger@wifoe.karlsruhe.de](mailto:dirk.metzger@wifoe.karlsruhe.de)

T 0721 133 7348

Text, Layout, Photos, Graphics

KFE

Historical picture page 2

Stadtarchiv Karlsruhe 8/Alben

41, 376b

Site plan page 4

ASTOC Architects & Planners

Print

Druckcooperative Karlsruhe

Printed on recycled paper

November 2013

[www.perfekt-futur.de](http://www.perfekt-futur.de)

**KA  
2015**  
MASTERPLAN  
KARLSRUHE



karlsruherfächer

 **ALTER SCHLACHTHOF**  
KARLSRUHE